

TECHNICAL MANUAL

ORGANIZATIONAL, DIRECT SUPPORT, AND GENERAL SUPPORT  
MAINTENANCE REPAIR PARTS AND SPECIAL TOOLS LIST  
(INCLUDING DEPOT MAINTENANCE REPAIR PARTS AND SPECIAL TOOLS)

FOR

POWER SUPPLY PP-7549/U  
(NSN 6130-01-018-1226)

---

HEADQUARTERS, DEPARTMENT OF THE ARMY

28 AUGUST 1981

Technical Manual  
 No. 11-6625-2978-24P

HEADQUARTERS  
 DEPARTMENT OF THE ARMY  
 Washington, DC, 28 August 1981

**ORGANIZATIONAL, DIRECT SUPPORT, AND GENERAL SUPPORT  
 MAINTENANCE REPAIR PARTS AND SPECIAL TOOLS LIST  
 (INCLUDING DEPOT MAINTENANCE REPAIR PARTS AND SPECIAL TOOLS)**

**FOR**

**POWER SUPPLY PP-7549/U  
 (NSN 6130-01-018-1226)**

Current as of 11 March 1981

**REPORTING ERRORS AND RECOMMENDING IMPROVEMENTS**

You can help improve this manual. If you find any mistakes or if you know of a way to improve the procedures, please let us know. Mail your letter, DA Form 2028 (Recommended Changes to Publications and Blank Forms), or DA Form 2028-2 located in back of this manual direct to: Commander, US Army Communications and Electronics Materiel Readiness Command, ATTN: DRSEL-ME-MQ, Fort Monmouth, NJ 07703,

In either case, a reply will be furnished direct to you.

**Table of Contents**

	<i>Page</i>	<i>Figure</i>	<i>Illus.</i>
Section I. Introduction . . . . .	1		
II. Repair Parts List . . . . .	5		
Group 00 Power Supply PP-7549/U . . . . .	5		1
01 Storage Battery BT-131 (See Group 00 for parts)			
02 Circuit Card Assembly Al . . . . .	9		2
Section III. Special Tools List (Not applicable)			
IV. National Stock Number and Part Number Index . . . . .	10		

# SECTION I INTRODUCTION

## 1. Scope

This manual lists spares and repair parts; special tools; special test, measurement, and diagnostic equipment (TMDE), and other special support equipment required for performance of organizational, direct support, and general support maintenance for the PP-7549/U. It authorizes the requisitioning and issue of spares and repair parts as indicated by the source and maintenance codes.

## 2. General

This Repair Parts and Special Tools List is divided into the following sections:

*a. Section H. Repair Parts List.* A list of spares and repair parts authorized for use in the performance of maintenance. The list also includes parts which must be removed for replacement of the authorized parts. Parts lists are composed of functional groups in numeric sequence, with the parts in each group listed in figure and item sequence.

*b. Section III. Special Tools List.* Not applicable.

*c. Section IV. National Stock Number and Part Number Index.* A list, in National item identification number (NIIN) sequence, of all National stock numbers (NSN) appearing in the listings, followed by a list, in alphameric sequence, of all part numbers appearing in the listings. National stock numbers and part numbers are cross-referenced to each illustration figure and item number appearance.

## 3. Explanation of Columns

*a. Illustration.* This column is divided as follows:

(1) *Figure number.* Indicates the figure number of the illustration on which the item is shown.

(2) *Item number.* The number used to identify item called out in the illustration.

*b. Source, Maintenance, and Recoverability (SMR) Codes.*

(1) *Source Code.* Source codes indicate the manner of acquiring support items for maintenance, repair, or overhaul of end items. Source codes are entered in the first and second positions of the Uniform SMR Code format as follows:

<i>Code</i>	<i>Definition</i>
PA	Item procured and stocked for anticipated or known usage.
XD-A	A support item that is not stocked. When required, item will be procured through normal supply channels.

## NOTE

Cannibalization or salvage may be used as a source of supply for any items source coded above except those coded XA and aircraft support items as restricted by AR 700-42.

(2) *Maintenance code.* Maintenance codes are assigned to indicate the levels of maintenance authorized to USE and REPAIR support items. The maintenance codes are entered in the third and fourth positions of the Uniform SMR Code format as follows:

(a) The maintenance code entered in the third position will indicate the lowest maintenance level authorized to remove, replace, and use the support item. The maintenance code entered in the third position will indicate one of the following levels of maintenance:

H—Support item is removed, replaced, used at the general support level.

(b) The maintenance code entered in the fourth position indicates whether the item is to be repaired and identifies the lowest maintenance level with the capability to perform complete repair (i.e., all authorized maintenance functions). This position will contain one of the following maintenance codes:

<i>Code</i>	<i>Application/Explanation</i>
H	The lowest maintenance level capable of complete repair of the support item is the general support level.
Z	Nonreparable. No repair is authorized.

(3) *Recoverability code.* Recoverability codes are assigned to support items to indicate the disposition action on unserviceable items. The recoverability code is entered in the fifth position of the Uniform SMR Code format as follows:

<i>Recoverability Codes</i>	<i>Definition</i>
Z	Nonreparable item. When unserviceable, condemn and dispose at the level indicated in position 3.
H	Reparable item. When uneconomically repairable, condemn and dispose at the general support level.
A	Item requires special handling or condemnation procedures because of specific reasons (i.e., precious metal content, high dollar value, critical material or hazardous material). Refer to appropriate manuals/directives for specific instructions.

*c. National Stock Number.* Indicates the National stock number assigned to the item and will be used for requisitioning purposes.

d. *Federal Supply Code for Manufacturer (FSCM)*. The FSCM is a 5-digit numeric code listed in SB 708-41/42 which is used to identify the manufacturer, distributor, or Government agency, etc.

e. *Part Number*. Indicates the primary number used by the manufacturer (individual, company, firm, corporation, or Government activity), which controls the design and characteristics of the item by means of its engineering drawings, specifications, standards, and inspection requirements to identify an item or range of items.

#### NOTE

When a stock numbered item is requisitioned, the repair part received may have a different part number than the part being replaced.

f. *Description*. Indicates the Federal item name and, if required, a minimum description to identify the item.

g. *Unit of Measure (U/M)*. Indicates the standard of the basic quantity of the listed item as used in performing the actual maintenance function. This measure is expressed by a two-character alphabetical abbreviation (e.g., ea, in, pr, etc). When the unit of measures differs from the unit of issue, the lowest unit of issue that will satisfy the required units of measure will be requisitioned.

h. *Quantity Incorporated in Unit*. Indicates the quantity of the item used in the breakout shown on the illustration figure, which is prepared for a functional group, subfunctional group, or an assembly,

#### 4. Special Information

a. The following publications pertain to the PP-7549/U and its components:  
TM 11-6625-2978-14, Power Supply PP-7549/U (To be published)

b. National stock numbers (NSN'S) that are missing from P source coded items have been applied for and will be added to this TM by future change/revision when they are entered in the Army Master Data File (AMDF). Until the NSN'S are established and published, submit exception requisitions to: Commander, US Army Communications and Electronics Materiel Readiness Command, ATTN: DRSEL-MM, Fort Monmouth, NJ 07703 for the part required to support your equipment.

### 5. How to Locate Repair Parts

a. When National stock number or part number is unknown.

(1) *First*. Using the table of contents, determine the functional group within which the item belongs.

This is necessary since illustrations are prepared for functional groups and listings are divided into the same groups.

(2) *Second*. Find the illustration covering the functional group to which the item belongs.

(3) *Third*. Identify the item on the illustration and note the illustration figure and the item number of the item.

(4) *Fourth*. Using the Repair Parts Listing, find the figure and item number noted on the illustration.

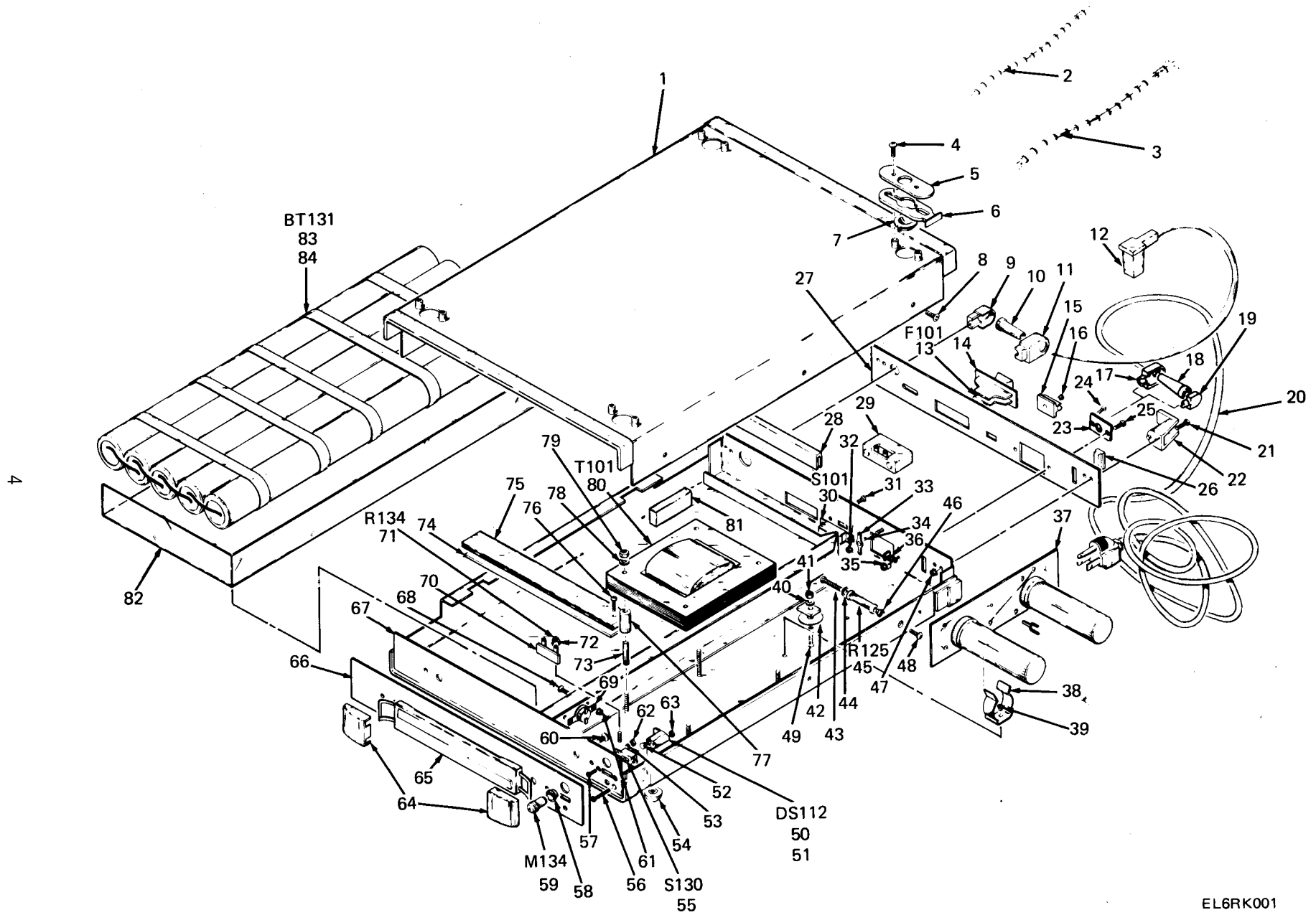
b. When the National stock number or part number is known.

(1) *First*. Using the Index of National Stock Numbers and Part Numbers, find the pertinent National stock number or part number. This index is in NIIN sequence followed by a list of part numbers in alphameric sequence, cross-referenced to the illustration figure number and item number.

(2) *Second*. After finding the figure and item number, locate the figure and item number in the repair parts list.

### 6. Abbreviations

Not applicable.



TM 11-6625-2978-24P

EL6RK001

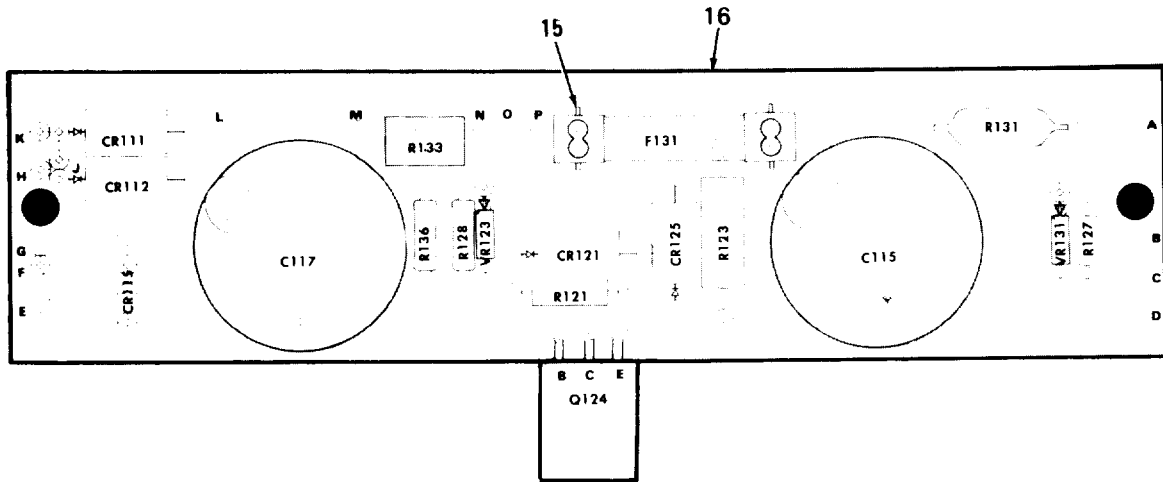
Figure 1. Power Supply PP-7549/U

SECTION II (1) ILLUSTRATION		(2)	(3)	TM11-6625-2978-24P		(6)	(7)	(8)
(A) FIG NO	(B) ITEM NO	SMR CODE	NATIONAL STOCK NUMBER	(4) FSCM	(5) PART NUMBER	DESCRIPTION	USABLE ON CODE U/M	QTY INC IN UNIT
GROUP 00 POWER SUPPLY PP-7549/U								
1	1	XDHZZ		80009	390-0371-02	COVER,PWR SPLY	EA	1
1	2	XDHZZ		80009	179-1980-01	WIRING HARNESS	EA	1
1	3	XDHZZ		80009	179-1961-00	WIRING HARNESS	EA	1
1	4	XDHZZ		80009	211-0565-00	SCREW,MACHINE	EA	6
1	5	XDHZZ		80009	386-2670-00	PLATE,LATCH MTG	EA	4
1	6	XDHZZ		80009	105-0484-00	STRIKE, CATCH	EA	4
1	7	XDHZZ		80009	201-0018-00	CUP,LOCATING	EA	4
1	8	XDHZZ		80009	211-0565-00	SCREW,MACHINE	EA	8
1	9	XDHZZ		80009	358-0371-00	BSHG,STRAIN RLF	EA	1
1	10	XDHZZ		80009	200-1004-00	CABLE,NIP., ELEC	EA	1
1	11	XDHZZ		80009	358-0372-00	BSHG,STRAIN RLF	EA	1
1	12	PAHZZ		16428	KH7668	CABLE ASSEMBLY,POW	EA	1
1	13	PAHZZ	5920-00-280-8342	81349	F02A250V1A	FUSE,CARTRIDGE	EA	1
1	14	XDHZZ		80009	352-0326-00	FUSEHOLDER	EA	1
1	15	XDHZZ		80009	343-0401-01	RETAINER,CLIP	EA	1
1	16	XDHZZ		80009	210-0631-00	EYELET,METALLIC	EA	1
1	17	XDHZZ		80009	358-0372-00	BSHG, STRAIN RLF	EA	1
1	18	XDHZZ		80009	200-1004-00	CABLE,NIP.,ELEC	EA	1
1	19	XDHZZ		80009	358-0371-00	BSHG,STRAIN RLF	EA	1
1	20	PAHZZ	6150-00-185-0426	16428	KH8391	CABLE ASSY,PWR	EA	1
1	21	PAHZZ	5305-01-006-8957	80009	211-0012-00	SCREW,MACHINE	EA	2
1	22	XDHZZ		80009	407-0322-00	BRACKET,PWR CA	EA	2
1	23	XDHZZ		80009	386-1122-00	PL,MTG,STRAIN R	EA	1
1	24	XDHZZ		80009	211-0071-00	SCREW,MACHINE	EA	1
1	25	XDHZZ		80009	211-0071-00	SCREW,MACHINE	EA	1
1	26	XDHZZ		80009	348-0254-01	FOOT,CABINET	EA	1
1	27	XDHZZ		80009	386-2632-00	PANEL,REAR	EA	1
1	28	XDHZZ		04930	7PLA	INSULATOR,PLATE	EA	1
1	29	XDHZZ		80009	204-0374-01	BODY,FUSE HOLDER	EA	1
1	30	PAHZZ	5930-01-005-9659	82389	46206LFE11A-1354	SWITCH,SLIDE	EA	1
1	31	PAHZZ	5305-00-841-8060	80009	211-0105-00	SCREW,MACHINE	EA	2
1	32	PAHZZ	5310-00-063-7360	78189	511-061800-00	NUT,PLAIN,ASSEMBLED	EA	2
1	33	PAHZZ	5940-00-156-7344	80063	SM-B-595953-1	TERMINAL,LUG	EA	2
1	34	PAHZZ	5310-00-836-3520	78189	211-041800-00	NUT,PLAIN,ASSEMBLED	EA	1
1	35	PAHZZ	5310-00-836-3520	78189	211-041800-00	NUT,PLAIN,ASSEMBLED	EA	1
1	36	PAHZZ	5940-00-271-4622	71785	332-11-02-001	TERMINAL BOARD	EA	1
1	37	PAHHH	6130-01-101-4465	80009	670-2758-01	CIRCUIT CARD ASSEM	EA	1
1	38	XDHZZ		80033	E50008-044	CLIP,ELECTRICAL	EA	2
1	39	XDHZZ		12014	R-3682	RIVET,TUBULAR	EA	2

SECTION II		TM11-6625-2978-24P						
(1)	(2)	(3)	(4)	(5)	(6)	(7)	(8)	
ILLUSTRATION		NATIONAL			DESCRIPTION		QTY	
(A)	(B)	STOCK	FSCM	PART		USABLE ON CODE	INC	
FIG	ITEM	NUMBER		NUMBER			IN	
NO	NO						UNIT	
1	40	PAHZZ 5310-01-052-4111	78189	4706-05-01-0531	WASHER, LOCK	EA	1	
1	41	XDHZZ	73743	3038-402	NUT, PLAIN, HEX	EA	1	
1	42	PAHZZ 5970-01-024-4788	80009	342-0136-00	INSULATOR, WASHER	EA	1	
1	43	XDHZZ 5305-00-984-6223	96906	MS35206-236	SCREW, MACHINE	EA	1	
1	44	XDHZZ 5325-00-809-6768	18680	A-424	EYELET, METALLIC	EA	1	
1	45	PAHZZ	56289	10EX20R00JQ54	RESISTOR, FI	EA	1	
1	46	XDHZZ	80009	210-0478-00	INSERT, SCREW THREAD	EA	1	
1	47	PAHZZ 5310-00-836-3520	78189	211-041800-00	NUT, PLAIN, ASSEMBLED	EA	2	
1	48	PAHZZ 5305-00-005-0795	80009	211-0507-00	SCREW, MACHINE	EA	1	
1	49	PAHZZ	80009	211-0510-00	SCREW	EA	1	
1	50	PAHZZ	08806	2282D	LAMP, INCANDESCENT	EA	1	
1	51	PAHZZ 6250-00-089-7366	80009	352-0067-00	HOLDER, LAMPHOLDER	EA	1	
1	52	PAHZZ 6210-00-436-5237	80009	378-0541-01	LENS, LIGHT	EA	1	
1	53	XDHZZ	78189	1202-00-00-0541C	WASHER, LOCK	EA	2	
1	54	PAHZZ 5340-00-225-3100	80009	348-0080-01	FOOT	EA	4	
1	55	PAHZZ 5930-00-501-3618	79727	G126MOD6860	SWITCH, SLIDE	EA	1	
1	56	XDHZZ	80009	211-0109-00	SCREW	EA	1	
1	57	XDHZZ	80009	211-0030-00	SCREW, MACHINE	EA	2	
1	58	XDHZZ	80009	352-0243-00	HOLDER, INDICATR	EA	1	
1	59	PAHZZ	80009	149-0044-02	METER, BATTERY LEVE	EA	1	
1	60	XDHZZ	80009	212-0560-00	SCREW, MACHINE	EA	2	
1	61	PAHZZ 5310-00-836-3520	78189	211-041800-00	NUT, PLAIN, ASSEMBLED	EA	2	
1	62	XDHZZ	80009	210-0405-00	NUT, PLAIN, HEXAGON	EA	2	
1	63	XDHZZ 5310-00-407-4600	73743	2X-12161-402	NUT, PLAIN, HEXAGON	EA	1	
1	64	XDHZZ	80009	344-0098-00	CLIP	EA	2	
1	65	PAHZZ 5340-00-083-0430	80009	367-0037-00	HANDLE	EA	1	
1	66	XDHZZ	80009	333-1739-01	PANEL, FRONT	EA	1	
1	67	XDHHH	80009	441-1168-02	CHASSIS, PWR SUP	EA	1	
1	68	PAHZZ 5305-00-492-2145	80009	211-0101-00	SCREW, MACHINE	EA	2	
1	69	XDHZZ	93410	430963	SW, THERMOSTATIC	EA	1	
1	70	XDHZZ 5940-00-672-0344	71785	332-14-04-022	TERMINAL BOARD	EA	1	
1	71	PAHZZ 5905-00-405-7900	91637	MFF1816G750R0F	RES. , FXD, FILM	EA	1	
1	72	PAHZZ 5310-00-063-7360	78189	511-061800-00	NUT, PLAIN, ASSEMBLED	EA	1	
1	73	XDHZZ	80009	166-0226-00	INS SLV, ELEC	EA	4	
1	74	XDHZZ	25472	3523	PAD, CUSHIONING	EA	2	
1	75	XDHZZ	80009	352-0363-00	RETAINER, BTRY	EA	2	
1	76	PAHZZ 5305-00-556-7366	80009	211-0559-00	SCREW, MAHCINE	EA	2	
1	77	XDHZZ	80009	361-0347-00	SPACER, SLEEVE	EA	4	
1	78	PAHZZ 5330-00-838-7816	80009	210-0812-00	GASKET	EA	4	
1	79	XDHZZ	80009	210-0445-00	NUT, PLAIN, HEX	EA	4	
1	80	PAHZZ	80009	120-0848-00	TRANSFORMER, POWER	EA	1	

SECTION II		TM11-6625-2978-24P						
(1)	(2)	(3)	(4)	(5)	(6)	(7)	(8)	
ILLUSTRATION					DESCRIPTION		QTY	
(A)	(B)	NATIONAL					INC	
FIG	ITEM	STOCK	FSCM	PART		USABLE ON CODE	IN	
NO	NO	NUMBER		NUMBER			UNIT	
1	81	XDZZ	80009	348-0090-00	PAD,CUSHIONING	EA	4	
1	82	XDZZ	80009	342-0192-00	INSUL,BAT,PACK	EA	1	
1	83	PAHHA	6140-01-101-4457	09823	40289	BATTERY,STORAGE,SE	EA	1
1	84	PAHZA	6140-01-101-4458	09823	400701-075	BATTERY,UNIT	EA	5





REFERENCE DESIGNATION-TO-ITEM NUMBER TABLE

REF DES	ITEM NO.	REF DES	ITEM NO.	REF DES	ITEM NO.
C115	1	R123	7		
C117	1				
CR111	2	R127	8		
CR112	2	R128	9		
CR115	3	R131	10		
CR121	2	R133	11		
CR125	2	R136	12		
F131	4	VR123	13		
Q124	5	VR131	14		
R121	6				

EL6RK002

Figure 2. Circuit Card Assembly A1

SECTION II (1) ILLUSTRATION		TM11-6625-2978-24P		(6) DESCRIPTION		(7)	(8)
(A) FIG NO	(B) ITEM NO	(2) SMR CODE	(3) NATIONAL STOCK NUMBER	(4) FSCM	(5) PART NUMBER	USABLE ON CODE U/M	QTY INC IN UNIT
GROUP 02 CIRCUIT CARD ASSEMBLY A1							
2	1	PAHZZ	5910-01-034-8011	90201	20-36096	EA	2
2	2	PAHZZ	5961-00-923-9763	14433	LG4016	EA	4
2	3	PAHZZ	5961-00-325-8453	05828	2KBP02-8	EA	1
2	4	PAHZZ	5920-00-548-3126	81349	F02A25OV6A	EA	1
2	5	PAHZZ	5961-00-250-4028	04713	MJE1102	EA	1
2	6	PAHZZ	5905-00-141-1168	F6141	5491	EA	1
2	7	PAHZZ		01121	GB7505	EA	1
2	8	PAHZZ	5905-00-726-5344	01121	CB1531	EA	1
2	9	PAHZZ	5905-00-426-7732	91637	MFF1816G26100F	EA	1
2	10	PAHZZ	5905-00-243-0893	91637	RS2B-D6R800J	EA	1
2	11	PAHZZ	5905-01-045-7581	73138	72X-76-0252K	EA	1
2	12	PAHZZ	5905-00-913-7121	91637	MFF1816G90900F	EA	1
2	13	PAHZZ		04713	SZG35008	EA	1
2	14	PAHZZ	5961-00-752-6163	81349	JAN1N965B	EA	1
2	15	PAHZZ	5999-00-465-9987	80009	344-0154-00	EA	2
2	16	XDHZZ		80009	388-3305-00	EA	1

## NATIONAL STOCK NUMBER AND PART NUMBER INDEX

NOTE: LATEST NATIONAL STOCK NUMBER AND PART NUMBER ASSIGNMENTS ARE INCLUDED AT END OF INDEX

STOCK NUMBER	FIGURE NO	ITEM NO	STOCK NUMBER	FIGURE NO	ITEM NO
5305-00-005-0795	1	48	5940-00-672-0344	1	70
5310-00-063-7360	1	32	5905-00-726-5344	2	8
5310-00-063-7360	1	72	5961-00-752-6163	2	14
5340-00-083-0430	1	65	5325-00-809-6768	1	44
6250-00-089-7366	1	51	5310-00-836-3520	1	34
5905-00-141-1168	2	6	5310-00-836-3520	1	35
5940-00-156-7344	1	33	5310-00-836-3520	1	47
6150-00-185-0426	1	20	5310-00-836-3520	1	61
5340-00-225-3100	1	54	5330-00-838-7816	1	78
5905-00-243-0893	2	10	5305-00-841-8060	1	31
5961-00-250-4028	2	5	5905-00-913-7121	2	12
5940-00-271-4622	1	36	5961-00-923-9763	2	2
5920-00-280-8342	1	13	5305-00-984-6223	1	43
5961-00-325-8453	2	3	5930-01-005-9659	1	30
5905-00-405-7900	1	71	5305-01-006-8957	1	21
5310-00-407-4600	1	63	5970-01-024-4788	1	42
5905-00-426-7732	2	9	5910-01-034-8011	2	1
6210-00-436-5237	1	52	5905-01-045-7581	2	11
5999-00-465-9987	2	15	5310-01-052-4111	1	40
5305-00-492-2145	1	68	6140-01-101-4457	1	83
5930-00-501-3618	1	55	6140-01-101-4458	1	84
5920-00-548-3126	2	4	6130-01-101-4465	1	37
5305-00-556-7366	1	76			

FSCM	PART NUMBER	FIGURE NO	ITEM NO	FSCM	PART NUMBER	FIGURE NO	ITEM NO
18680	A-424	1	44	80009	211-0507-00	1	48
01121	CB1531	2	8	80009	211-0510-00	1	49
80033	E50008-044	1	38	80009	211-0559-00	1	76
81349	F02A250V6A	2	4	80009	211-0565-00	1	4
81349	F02A250V1A	1	13	80009	211-0565-00	1	8
01121	GB7505	2	7	80009	212-0560-00	1	60
79727	G126MOD6860	1	55	08806	2282D	1	50
81349	JAN1N965B	2	14	73743	3038-402	1	41
16428	KH7668	1	12	71785	332-11-02-001	1	36
16428	KH8391	1	20	71785	332-14-04-022	1	70
14433	LG4016	2	2	80009	333-1739-01	1	66
91637	MFF1816G26100F	2	9	80009	342-0136-00	1	42
91637	MFF1816G750R0F	1	71	80009	342-0192-00	1	82
91637	MFF1816G90900F	2	12	80009	343-0401-01	1	15
04713	MJE1102	2	5	80009	344-0098-00	1	64
96906	MS35206-236	1	43	80009	344-0154-00	2	15
12014	R-3682	1	39	80009	348-0080-01	1	54
91637	RS2B-D6R800J	2	10	80009	348-0090-00	1	81
80063	SM-B-595953-1	1	33	80009	348-0254-01	1	26
04713	SZG35008	2	13	80009	352-0067-00	1	51
80009	105-0484-00	1	6	80009	352-0243-00	1	58
80009	120-0848-00	1	80	80009	352-0326-00	1	14
78189	1202-00-00-0541C	1	53	80009	352-0363-00	1	75
80009	149-0044-02	1	59	25472	3523	1	74
80009	166-0226-00	1	73	80009	358-0371-00	1	9
80009	179-1961-00	1	3	80009	358-0371-00	1	19
80009	179-1980-01	1	2	80009	358-0372-00	1	11
05828	2KBP02-8	2	3	80009	358-0372-00	1	17
73743	2X-12161-402	1	63	80009	361-0347-00	1	77
90201	20-36096	2	1	80009	367-0037-00	1	65
80009	200-1004-00	1	10	80009	378-0541-01	1	52
80009	200-1004-00	1	18	80009	386-1122-00	1	23
80009	201-0018-00	1	7	80009	386-2632-00	1	27
80009	204-0374-01	1	29	80009	386-2670-00	1	5
80009	210-0405-00	1	62	80009	388-3305-00	2	16
80009	210-0445-00	1	79	80009	390-0371-02	1	1
80009	210-0478-00	1	46	09823	400701-075	1	84
80009	210-0631-00	1	16	09823	40289	1	83
80009	210-0812-00	1	78	80009	407-0322-00	1	22
80009	211-0012-00	1	21	93410	430963	1	69
80009	211-0030-00	1	57	80009	441-1168-02	1	67
80009	211-0071-00	1	24	82389	46206LFE11A-1354	1	30
80009	211-0071-00	1	25	78189	4706-05-01-0531	1	40
80009	211-0101-00	1	68	78189	511-061800-00	1	32
80009	211-0105-00	1	31	78189	511-061800-00	1	72
80009	211-0109-00	1	56	F6141	5491	2	6
78189	211-041800-00	1	34	80009	670-2758-01	1	37
78189	211-041800-00	1	35	04930	7PLA	1	28
78189	211-041800-00	1	47	73138	72X-76-0252K	2	11
78189	211-041800-00	1	61				

## LATEST PART NUMBER ASSIGNMENT

56289	10EX20R00JQ54	1	45
-------	---------------	---	----

By Order of the Secretary of the Army:

E. C. MEYER  
*General, United States Army*  
*Chief of Staff*

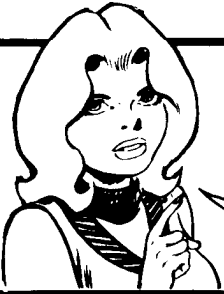
Official:

ROBERT M. JOYCE  
*Brigadier General, United States Army*  
*The Adjutant General*

Distribution:

To be distributed in accordance with Special List.

RECOMMENDED CHANGES TO EQUIPMENT TECHNICAL PUBLICATIONS



THEN... JOT DOWN THE DOPE ABOUT IT ON THIS FORM. CAREFULLY TEAR IT OUT, FOLD IT AND DROP IT IN THE MAIL!

SOMETHING WRONG WITH THIS PUBLICATION?

FROM (PRINT YOUR UNIT'S COMPLETE ADDRESS)  
 Commander  
 Stateside Army Depot  
 ATTN: AMSTA-US  
 Stateside, N.J. 07703

DATE SENT  
 10 July 1975

PUBLICATION NUMBER  
 TM 11-5840-340-20P

PUBLICATION DATE  
 23 Jan 78

PUBLICATION TITLE  
 Radar Set AN/PRC-76

BE EXACT. PIN-POINT WHERE IT IS

PAGE NO	PARA-GRAPH	FIGURE NO	TABLE NO
33			
44		19	
45			

IN THIS SPACE TELL WHAT IS WRONG AND WHAT SHOULD BE DONE ABOUT IT:

For item 2, change the NSN to read: 5835-00-134-9186.  
 Reason: Accuracy.

Identify the cover on the junction box (item no. 5).  
 Reason: It is a separate item and is not called out on figure 19.

Add the cover of the junction box as an item in the listing for figure 19.  
 Reason: Same as above

SAMPLE

S

PRINTED NAME, GRADE OR TITLE, AND TELEPHONE NUMBER  
 SSG I. M. DeSpirit of 999-1776

SIGN HERE

TEAR ALONG PERFORATED LINE

RECOMMENDED CHANGES TO EQUIPMENT TECHNICAL PUBLICATIONS



THEN... JOT DOWN THE DOPE ABOUT IT ON THIS FORM. CAREFULLY TEAR IT OUT. FOLD IT AND DROP IT IN THE MAIL.

SOMETHING WRONG WITH THIS PUBLICATION?

FROM (PRINT YOUR UNIT'S COMPLETE ADDRESS)

DATE SENT

PUBLICATION NUMBER  
TM 11-6625-2978-24P

PUBLICATION DATE  
28 AUG 1981

PUBLICATION TITLE  
Power Supply PP-7549/U

BE EXACT PIN-POINT WHERE IT IS

PAGE NO	PARA-GRAPH	FIGURE NO	TABLE NO

IN THIS SPACE TELL WHAT IS WRONG AND WHAT SHOULD BE DONE ABOUT IT:

TEAR ALONG PERFORATED LINE

PRINTED NAME GRADE OR TITLE AND TELEPHONE NUMBER

SIGN HERE

DA FORM 2028-2  
1 JUL 79

PREVIOUS EDITIONS ARE OBSOLETE.

P.S.--IF YOUR OUTFIT WANTS TO KNOW ABOUT YOUR RECOMMENDATION MAKE A CARBON COPY OF THIS AND GIVE IT TO YOUR HEADQUARTERS

FILL IN YOUR  
UNIT'S ADDRESS

FOLD BACK

DEPARTMENT OF THE ARMY

\_\_\_\_\_  
\_\_\_\_\_

OFFICIAL BUSINESS  
PENALTY FOR PRIVATE USE \$300

POSTAGE AND FEES PAID  
DEPARTMENT OF THE ARMY  
DOD 314



TEAR ALONG PERFORATED LINE

Commander  
US Army Communications and  
Electronics Materiel Readiness Command  
ATTN: DRSEL-ME-MQ  
Fort Monmouth, New Jersey 07703

# THE METRIC SYSTEM AND EQUIVALENTS

## WEIGHT MEASURE

1 Centimeter = 10 Millimeters = 0.01 Meters = 0.3937 Inches  
 1 Meter = 100 Centimeters = 1000 Millimeters = 39.37 Inches  
 1 Kilometer = 1000 Meters = 0.621 Miles

## WEIGHTS

1 Gram = 0.001 Kilograms = 1000 Milligrams = 0.035 Ounces  
 1 Kilogram = 1000 Grams = 2.2 lb.  
 1 Metric Ton = 1000 Kilograms = 1 Megagram = 1.1 Short Tons

## LIQUID MEASURE

1 Milliliter = 0.001 Liters = 0.0338 Fluid Ounces  
 1 Liter = 1000 Milliliters = 33.82 Fluid Ounces

## SQUARE MEASURE

1 Sq. Centimeter = 100 Sq. Millimeters = 0.155 Sq. Inches  
 1 Sq. Meter = 10,000 Sq. Centimeters = 10.76 Sq. Feet  
 1 Sq. Kilometer = 1,000,000 Sq. Meters = 0.386 Sq. Miles

## CUBIC MEASURE

1 Cu. Centimeter = 1000 Cu. Millimeters = 0.06 Cu. Inches  
 1 Cu. Meter = 1,000,000 Cu. Centimeters = 35.31 Cu. Feet

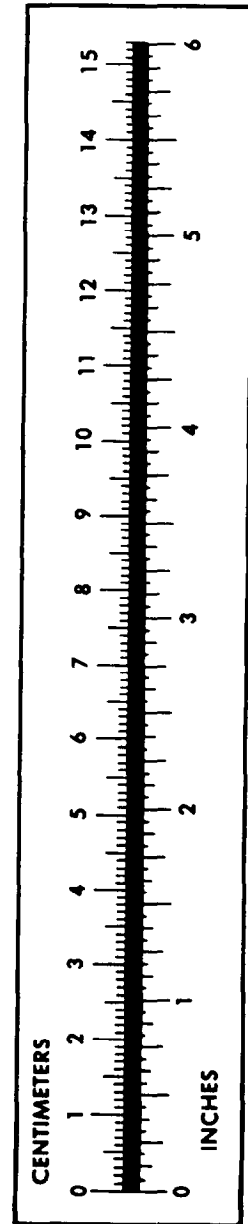
## TEMPERATURE

$5/9(^{\circ}\text{F} - 32) = ^{\circ}\text{C}$   
 212° Fahrenheit is equivalent to 100° Celsius  
 90° Fahrenheit is equivalent to 32.2° Celsius  
 32° Fahrenheit is equivalent to 0° Celsius  
 $9/5^{\circ}\text{C} + 32 = ^{\circ}\text{F}$

## APPROXIMATE CONVERSION FACTORS

TO CHANGE	TO	MULTIPLY BY
Inches	Centimeters	2.540
Feet	Meters	0.305
Yards	Meters	0.914
Miles	Kilometers	1.609
Square Inches	Square Centimeters	6.451
Square Feet	Square Meters	0.093
Square Yards	Square Meters	0.836
Square Miles	Square Kilometers	2.590
Acres	Square Hectometers	0.405
Cubic Feet	Cubic Meters	0.028
Cubic Yards	Cubic Meters	0.765
Fluid Ounces	Milliliters	29.573
its	Liters	0.473
arts	Liters	0.946
allons	Liters	3.785
Ounces	Grams	28.349
Pounds	Kilograms	0.454
Short Tons	Metric Tons	0.907
Pound-Feet	Newton-Meters	1.356
Pounds per Square Inch	Kilopascals	6.895
Miles per Gallon	Kilometers per Liter	0.425
Miles per Hour	Kilometers per Hour	1.609

TO CHANGE	TO	MULTIPLY BY
Centimeters	Inches	0.394
Meters	Feet	3.280
Meters	Yards	1.094
Kilometers	Miles	0.621
Square Centimeters	Square Inches	0.155
Square Meters	Square Feet	10.764
Square Meters	Square Yards	1.196
Square Kilometers	Square Miles	0.386
Square Hectometers	Acres	2.471
Cubic Meters	Cubic Feet	35.315
Cubic Meters	Cubic Yards	1.308
Milliliters	Fluid Ounces	0.034
Liters	Pints	2.113
Liters	Quarts	1.057
ers	Gallons	0.264
ms	Ounces	0.035
ograms	Pounds	2.205
Metric Tons	Short Tons	1.102
Newton-Meters	Pounds-Feet	0.738
Kilopascals	Pounds per Square Inch	0.145
ometers per Liter	Miles per Gallon	2.354
ometers per Hour	Miles per Hour	0.621





**PIN: 049583-000**